

FOR LEASE

1316 King Street, Bellingham, WA

Suite 2 (Ground Level) & Suite 3 (Second Level)



Office Spaces with Easy On/Off to I-5 and Great Natural Light

- ◆ Located just off the Lakeway exit on I-5 . Ample shared parking on site. Nicely landscaped and cared for property.
- ◆ Suite 2 has a simple 900 SF floor plan with two enclosed offices, reception, work station and private restroom. Offices have windows that open
- ◆ Suite 3 is a second level 1,300 SF space with two offices, reception area, business office and kitchen/break room. Beautiful atrium at the top of the stairs and great natural light all the way through. Must see to appreciate.
- ◆ Signage on Street Pylon



Sales, Leasing, Management
Office, Retail and Industrial Properties

114 W Magnolia Street, Suite 302, Bellingham, WA 98225

For information contact:

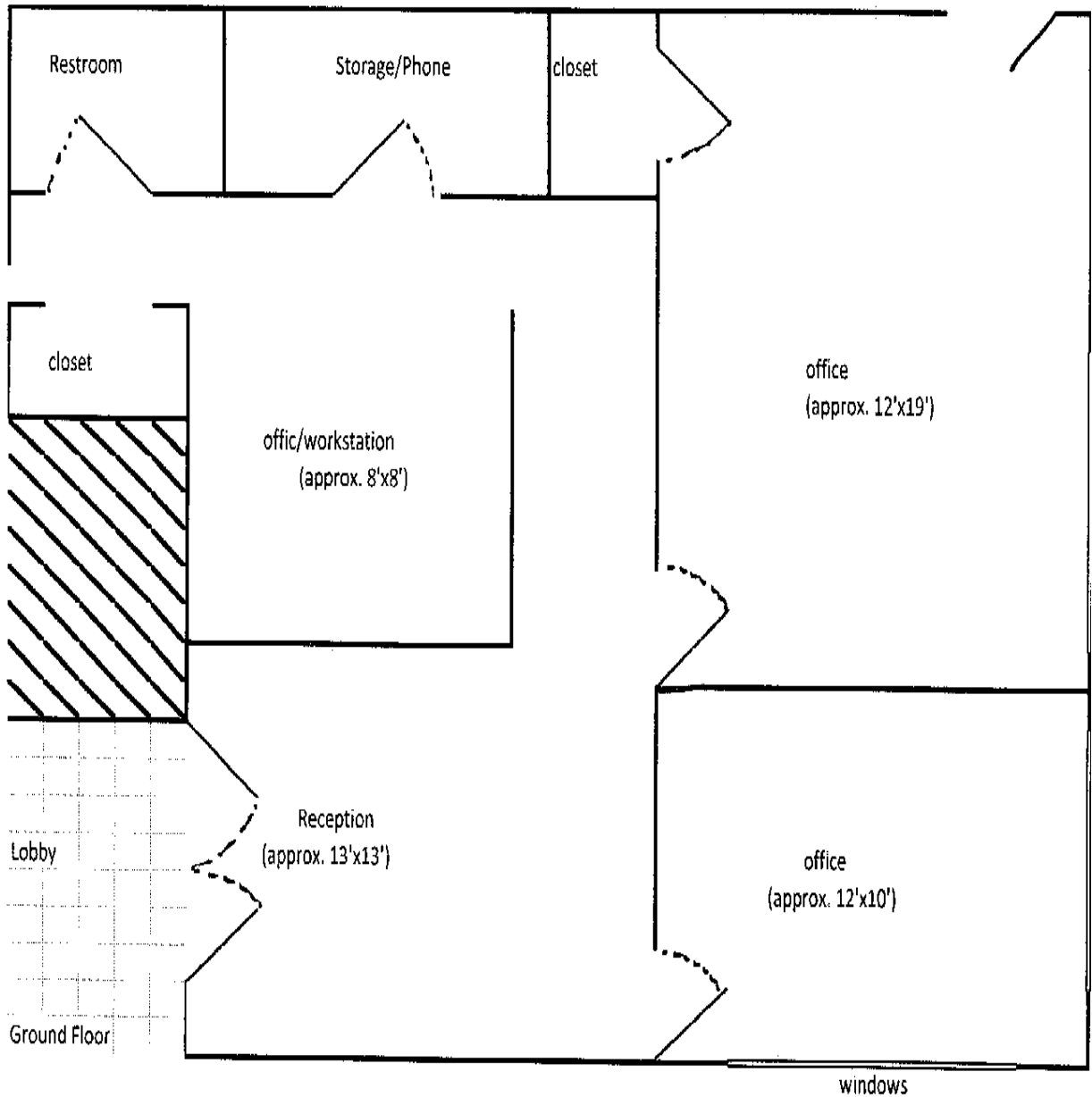
Tracy Carpenter

(360) 671-4200 x114

tracy@pacificcontinentalrealty.com

Information contained herein has been obtained from the owner of the property or from other sources that we deem reliable. We have no reason to doubt its accuracy, but we do not guarantee it.

Suite 2 Floor Plan



** drawing is not to scale



Sales, Leasing, Management
Office, Retail and Industrial Properties

114 W Magnolia Street, Suite 302, Bellingham, WA 98225

For information contact:

Tracy Carpenter

(360) 671-4200 x114

tracy@pacificcontinentalrealty.com

Suite 3

1,300 SF

- ◆ Second level space with stairway access
- ◆ Two large office spaces available
- ◆ Currently built for counseling office
- ◆ Large reception area, business office, kitchen/ break room
- ◆ Beautiful atrium at the top of the stairs
- ◆ Great natural light all the way through!



Skylight Above Stairway



Office #1



Business Office

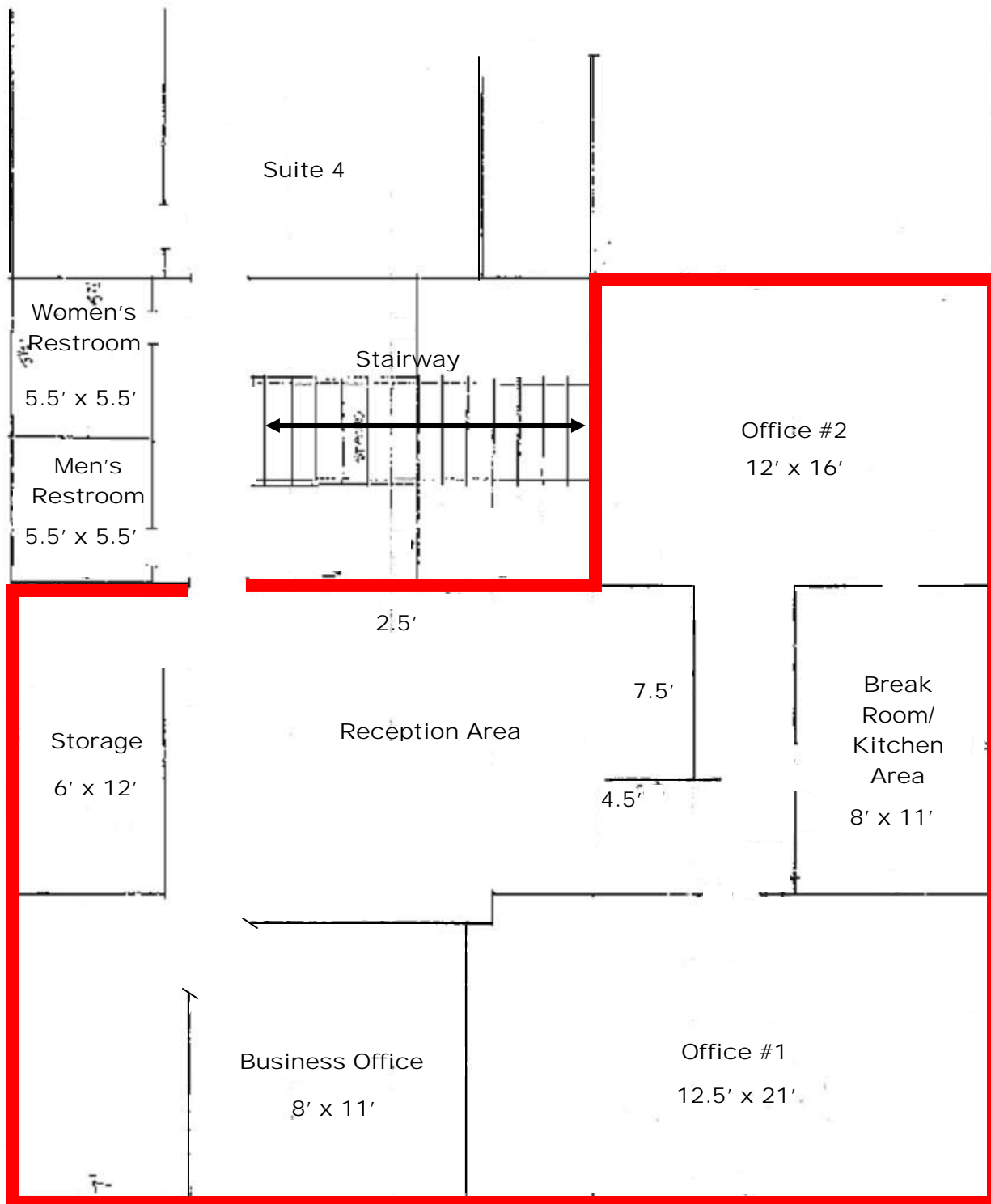


Reception Area



Office #2

Suite 3 Floor Plan



Sales, Leasing, Management
Office, Retail and Industrial Properties

114 W Magnolia Street, Suite 302, Bellingham, WA 98225

For information contact:

Tracy Carpenter

(360) 671-4200 x114

tracy@pacificcontinentalrealty.com