

FOR LEASE

Squalicum Corporate Park

3548 Meridian Street - Bellingham, WA



High Visibility Retail Space Available On Meridian St.

- Suite 102: 14,400 SF of retail space with frontage on Meridian Street
- Just south of Bellis Fair Mall and over 3,000,000 SF of retail development
- Excellent signage opportunities on the building and directly on Meridian St.
- Neighbors include West Marine and Family Christian Stores
- Ample parking on-site
- Property includes small loading area and storage space
- Located in a high traffic area just off of I-5 with traffic counts over 25,000

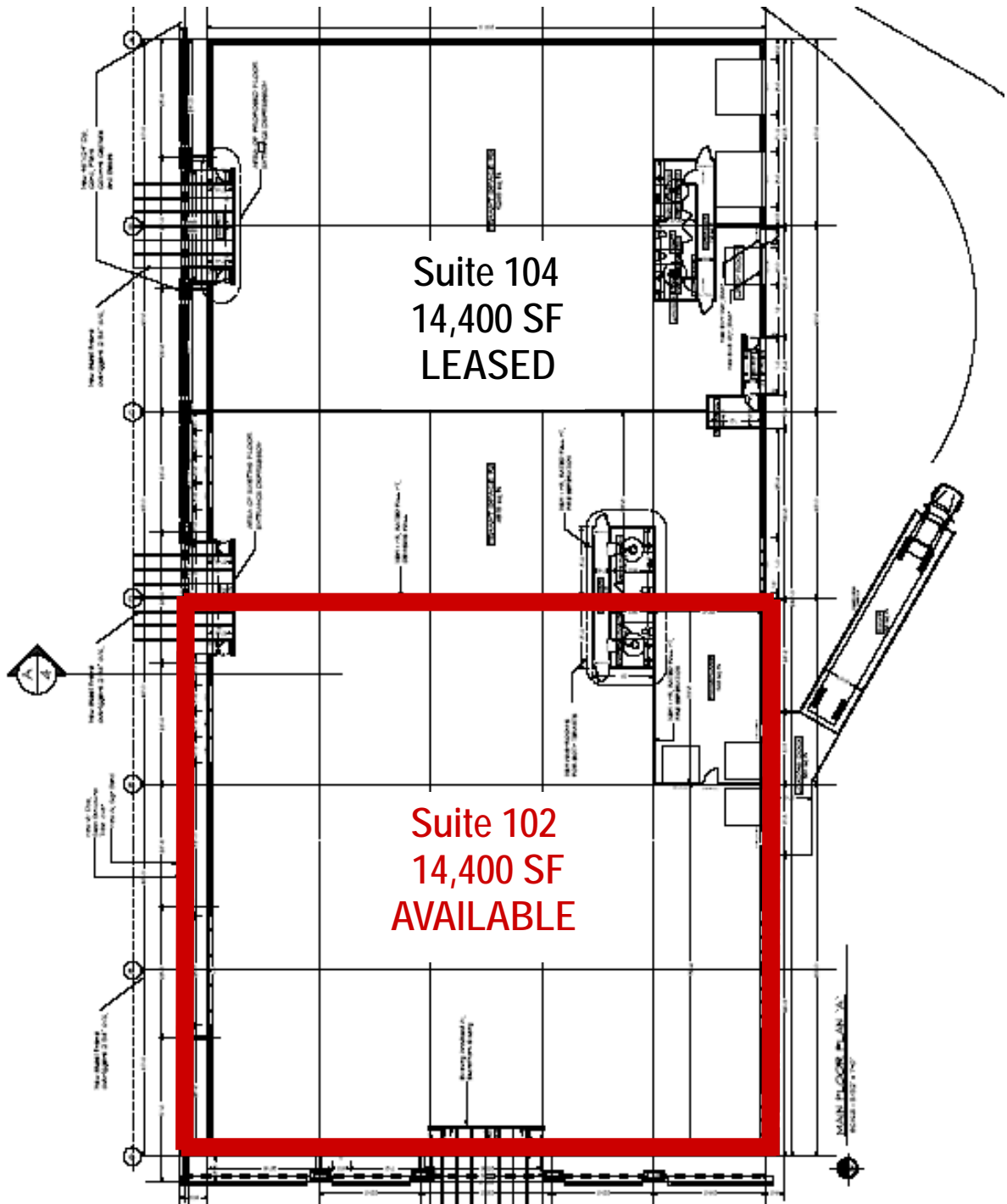


114 W. Magnolia, Suite 302
Bellingham, WA 98225

For information contact:

Jim Bjerke

(360) 671-4200 x101 (office)
jim@pacificcontinentalrealty.com



Meridian Street



114 W. Magnolia, Suite 302
Bellingham, WA 98225

For information contact:

Jim Bjerke

(360) 671-4200 x101 (office)
jim@pacificcontinentalrealty.com



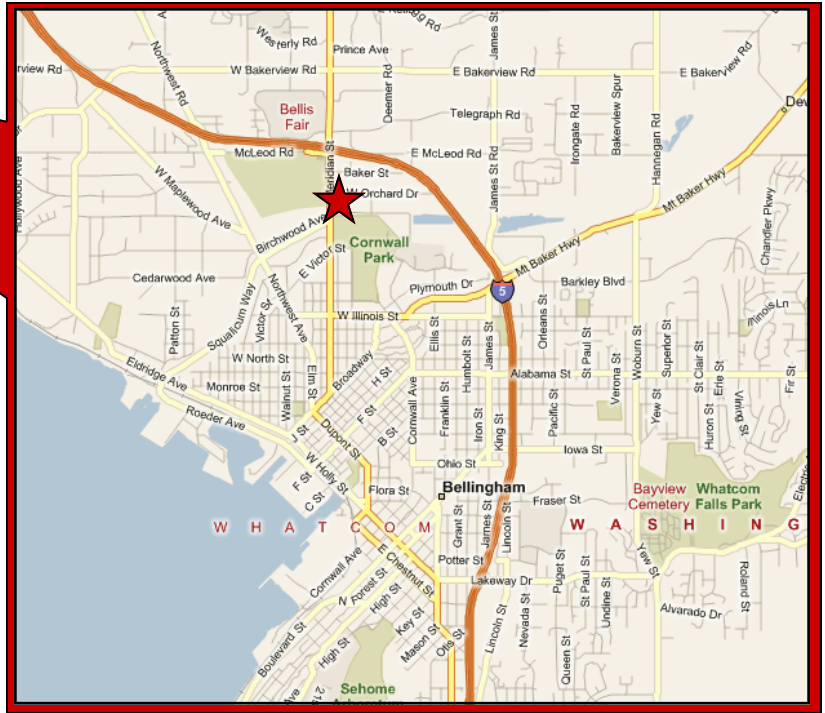
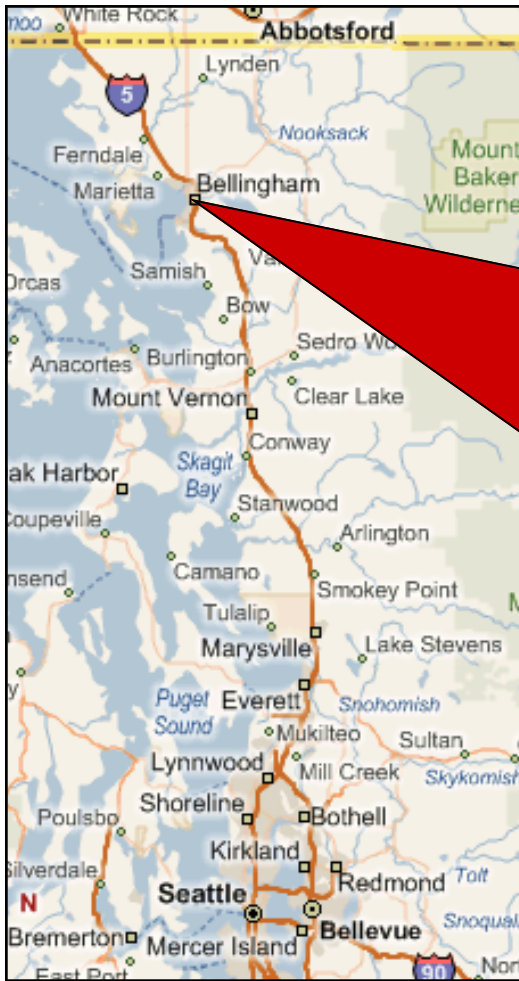
114 W. Magnolia, Suite 302
Bellingham, WA 98225

For information contact:

Jim Bjerke

(360) 671-4200 x101 (office)

jim@pacifcontrealty.com



114 W. Magnolia, Suite 302
 Bellingham, WA 98225

For information contact:

Jim Bjerke

(360) 671-4200 x101 (office)
jim@pacificcontinentalrealty.com