

FOR LEASE

1415 Commercial Street, Bellingham, WA



**2,008 SF of Office/Retail Space
in the Heart of Bellingham's Downtown Commercial District**

- This space includes 2 levels with 1,180 SF on the ground level plus 828 SF on the Mezzanine level
- Big windows with ample natural light
- Signage access on building
- Sinks in many of the offices (see floor plans)
- Close proximity to shops, restaurants, federal offices and downtown businesses
- High foot traffic and high traffic counts
- Street parking



**Pacific
Continental
Realty
LLC**
Sales, Leasing, Management
Office, Retail and Industrial Properties

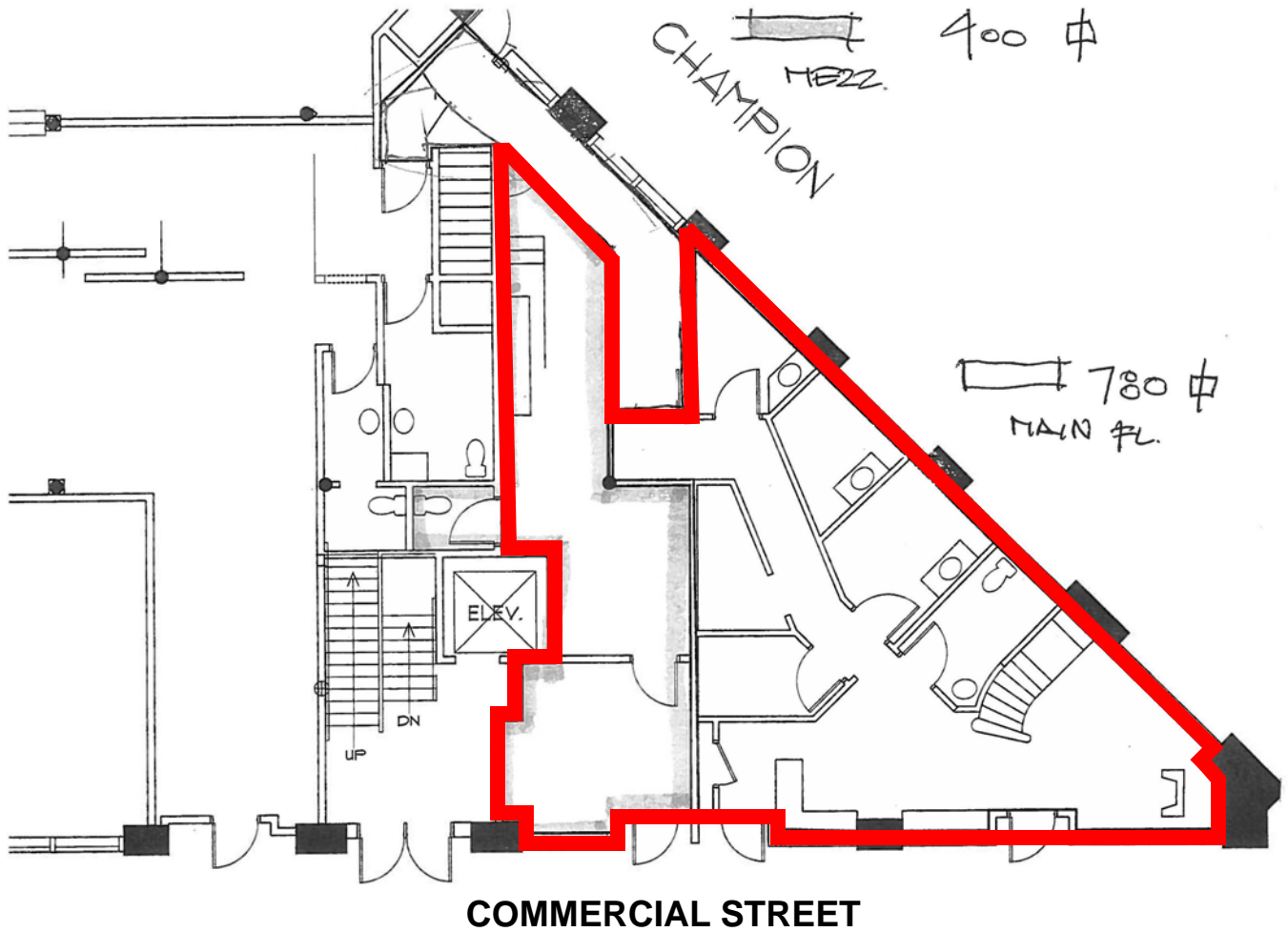
For information contact:

Tracy Carpenter

(360) 671-4200 ex 3114

tracy@pacificcontinentalrealty.com

114 W Magnolia Street, Suite 302, Bellingham, WA 98225



Sales, Leasing, Management
Office, Retail and Industrial Properties

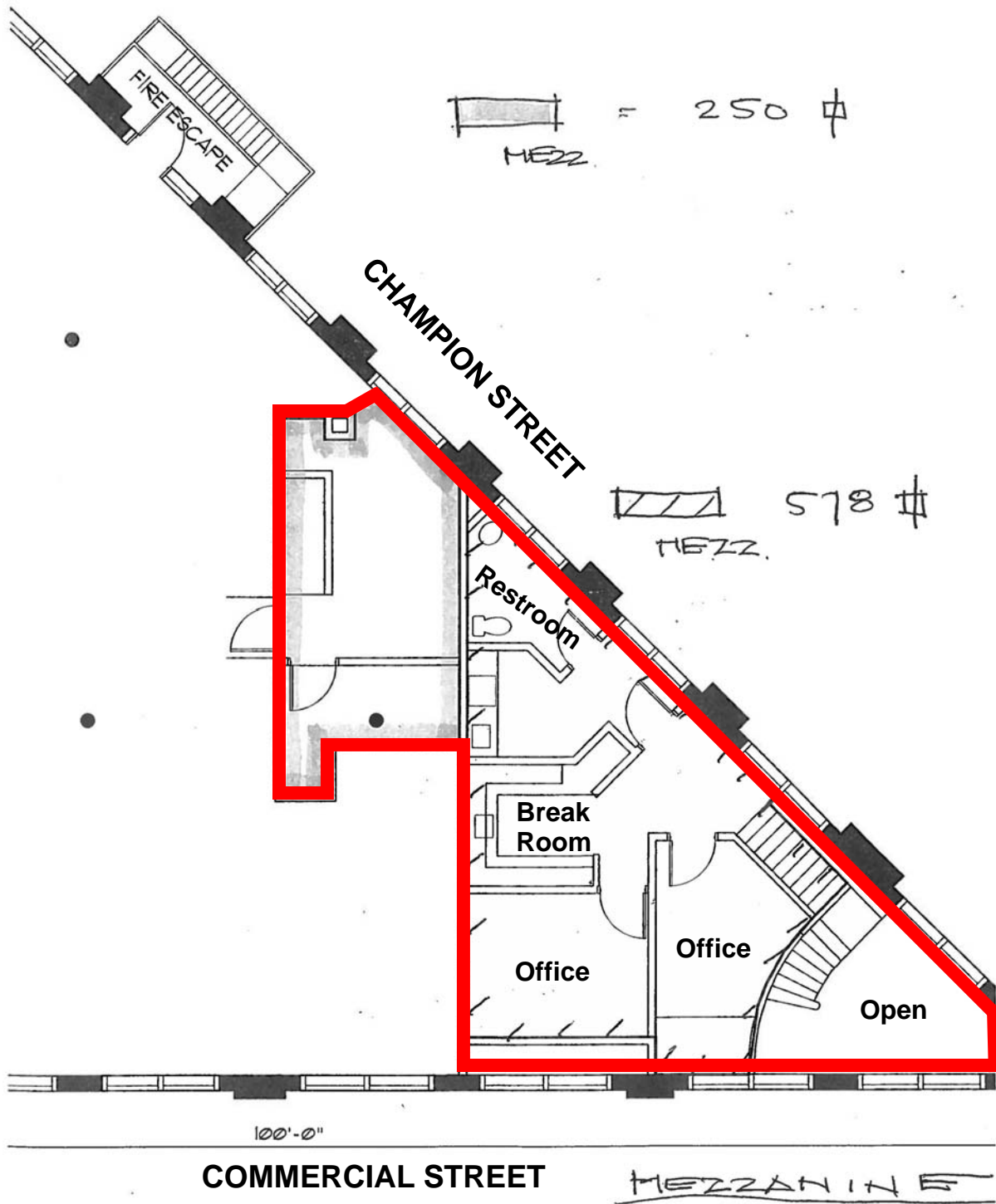
For information contact:

Tracy Carpenter

(360) 671-4200 ex 3114

tracy@pacificcontinentalrealty.com

114 W Magnolia Street, Suite 302, Bellingham, WA 98225



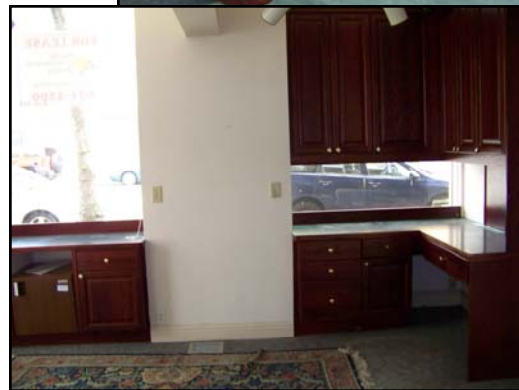
Pacific Continental Realty LLC
 Sales, Leasing, Management
 Office, Retail and Industrial Properties

For information contact:

Tracy Carpenter

(360) 671-4200 ex 3114
 tracy@pacificcontinentalrealty.com

114 W Magnolia Street, Suite 302, Bellingham, WA 98225



**Pacific
Continental
Realty
LLC**
Sales, Leasing, Management
Office, Retail and Industrial Properties

For information contact:

Tracy Carpenter

(360) 671-4200 ex 3114

tracy@pacificcontinentalrealty.com

114 W Magnolia Street, Suite 302, Bellingham, WA 98225

Information contained herein has been obtained from the owner of the property or from other sources that we deem reliable. We have no reason to doubt its accuracy, but we do not guarantee it.