

FOR LEASE

960 Harris Avenue, Bellingham, WA



Beautiful Executive Suites in Historic Fairhaven



Suite 203: **404 SF**

Suite 206: **296 SF**

- Shared waiting area
- Shared kitchenette
- 2 - ADA approved restrooms
- Parking is ample - behind building, and on street
- Beautiful, well-maintained newer building, built in 2006



114 W. Magnolia, Suite 302
Bellingham, WA 98225

For information contact:

Tracy Carpenter

Office: (360) 671-4200 ex 3114

Cell: (360) 303-2608

tracy@pacificcontinentalrealty.com



114 W. Magnolia, Suite 302
Bellingham, WA 98225

For information contact:

Tracy Carpenter

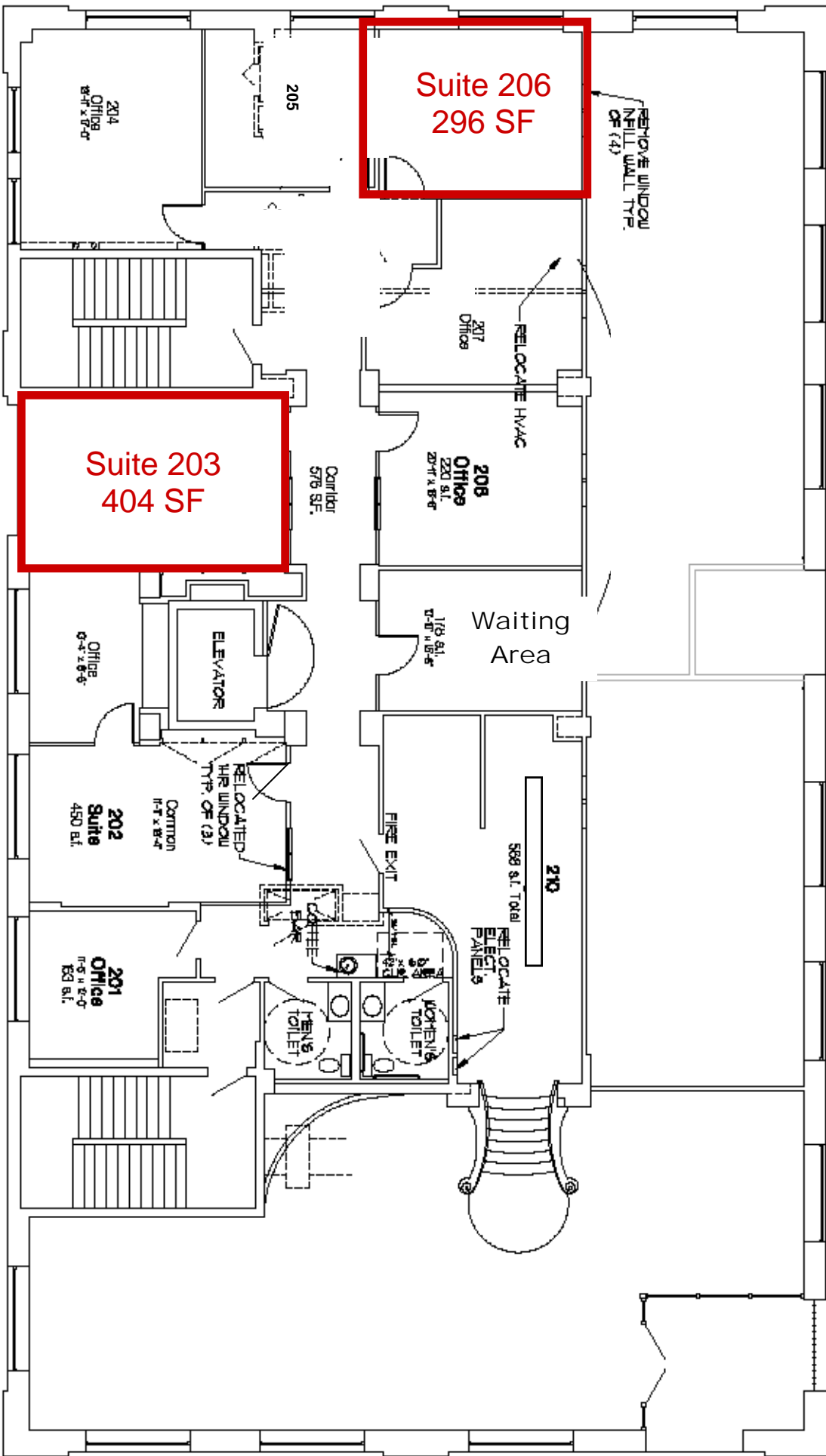
Office: (360) 671-4200 ex 3114

Cell: (360) 303-2608

tracy@pacificcontinentalrealty.com

Information contained herein has been obtained from the owner of the property or from other sources that we deem reliable. We have no reason to doubt its accuracy, but we do not guarantee it.

Harris Avenue



10th Street

TENANT IMPROVEMENT UPPER FLOOR PLAN

Scale : 1/8" = 1'-0"
 TOTAL AREA : 3,866 S.F. (INCLUDES STAIRS AND ELEV.)
 GROSS AREA : 3,319 S.F. (NOT INCLUDING STAIRS AND ELEV.)
 2,739 S.F. TOTAL LEASE SPACE

Areas calculated from outside face of exterior walls and centerline of common walls

- DEMOLISH EXISTING WALLS & WALLS
- DEMOLISH EXISTING WALLS CONSERVED FROM 2nd FLOOR UPPER LEVEL
- DEMOLISH PROPOSED NEW WALLS
- DEMOLISH WALLS TO BE REMOVED