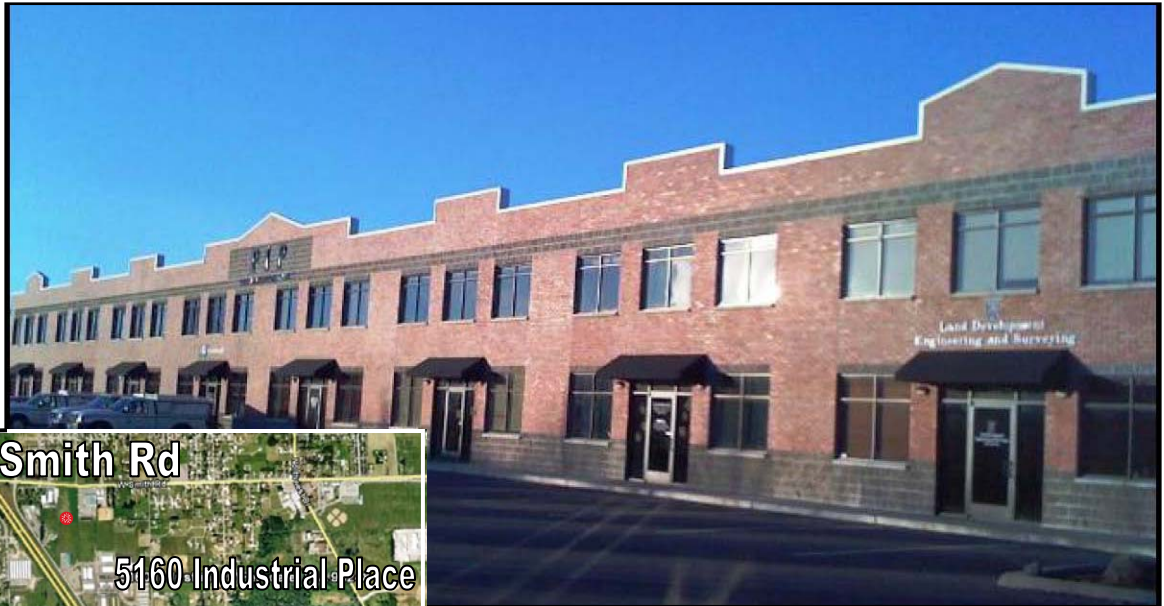


# FOR LEASE

***5160 Industrial Place, Ferndale, WA***



## **Office and Warehouse Space for Lease**

3,600 SF total with 2,400 SF of office and 1,200 SF of warehouse space located in the Pacific Place Industrial Area just North of Slater Road. The office is air conditioned and the warehouse is clean and sheet rocked. Fully bricked, this building has a lot of open space and natural light. This 2 story building is networked with network cabling in place for 22 work stations. Includes one 14 foot high roll up door in rear, 64 shared parking spaces on site, area for a kitchenette and has 200 AMPS single phase power. Ready to move in!



For information contact:

**Tracy Carpenter or Jim Bjerke**

(360) 671-4200 Ext. 3114

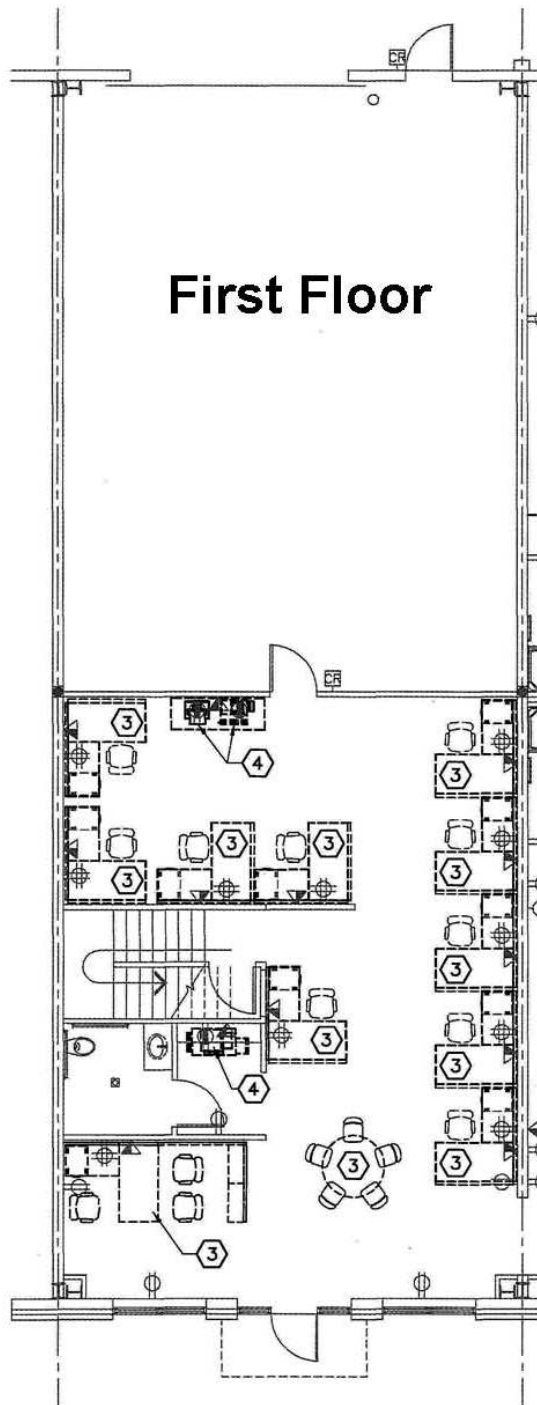
Tracy@pacificcontinentalrealty.com

Jim@pacificcontinentalrealty.com

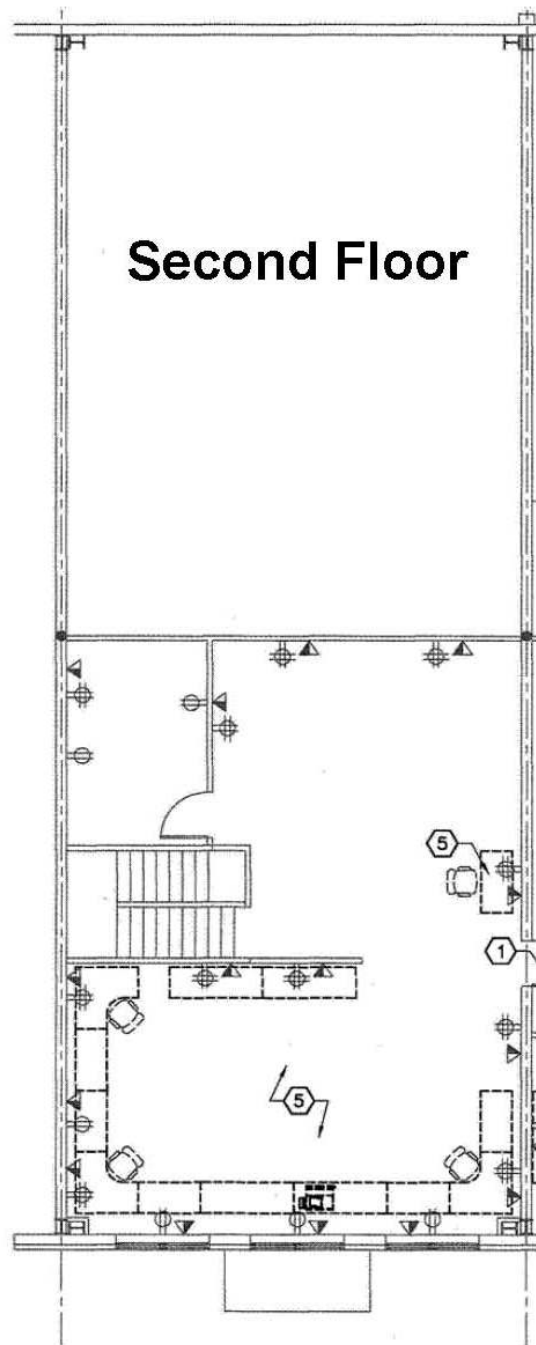
114 W Magnolia Street, Suite 302, Bellingham, WA 98225

Information contained herein has been obtained from the owner of the property or from other sources that we deem reliable. We have no reason to doubt its accuracy, but we do not guarantee it.

# Conceptual Floor Plan



First Floor



Second Floor



114 W. Magnolia, Suite 302  
Bellingham, WA 98225

For information contact:

**Tracy Carpenter or Jim Bjerke**

(360) 671-4200 Ext. 3114  
Tracy@pacificcontinentalrealty.com  
Jim@pacificcontinentalrealty.com

# 5160 Pacific Industrial Place Interior Photo Survey



Second Floor: Picture facing from back of building to front



Second Floor: Stairwell to left and office or conference room on right



Ground Floor: Entry Way/ Reception Area



Ground Floor: Restroom/ Storage Area



Ground Floor: Open Office Area



## 5160 Pacific Industrial Place Warehouse Photo Survey



Interior warehouse facing back of building



Exterior photo of back of warehouse