

FOR LEASE

1025 N State Street, Bellingham, WA



18,000 SF of Retail, Office, and Warehouse

- 6,000 SF each, of Retail, Office, and Warehouse-Divisible to 1,000 SF
- First level is Retail space, Second level is Office, and below Ground level is Warehouse Storage Space, accessible from the alleyway.
- Stair access from State St.
- Historical building with old brick walls, in downtown Bellingham
- One block from the Farmer's Market on Railroad Ave.



For information contact:

Tracy Carpenter

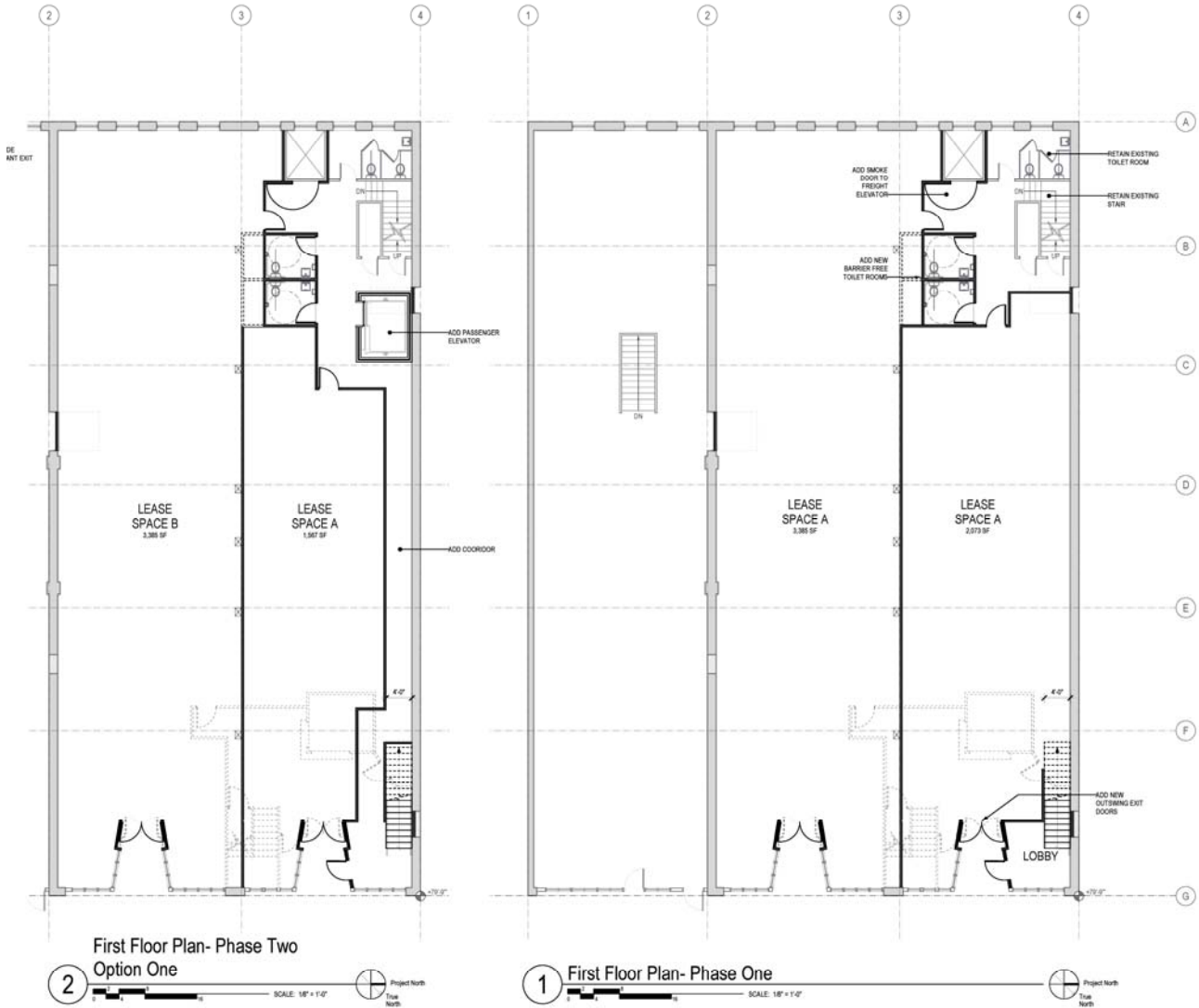
(360) 671-4200 ex 3114

tracy@pacificcontinentalrealty.com

114 W Magnolia Street, Suite 302, Bellingham, WA 98225

Information contained herein has been obtained from the owner of the property

1st Floor



114 W. Magnolia, Suite 302
Bellingham, WA 98225

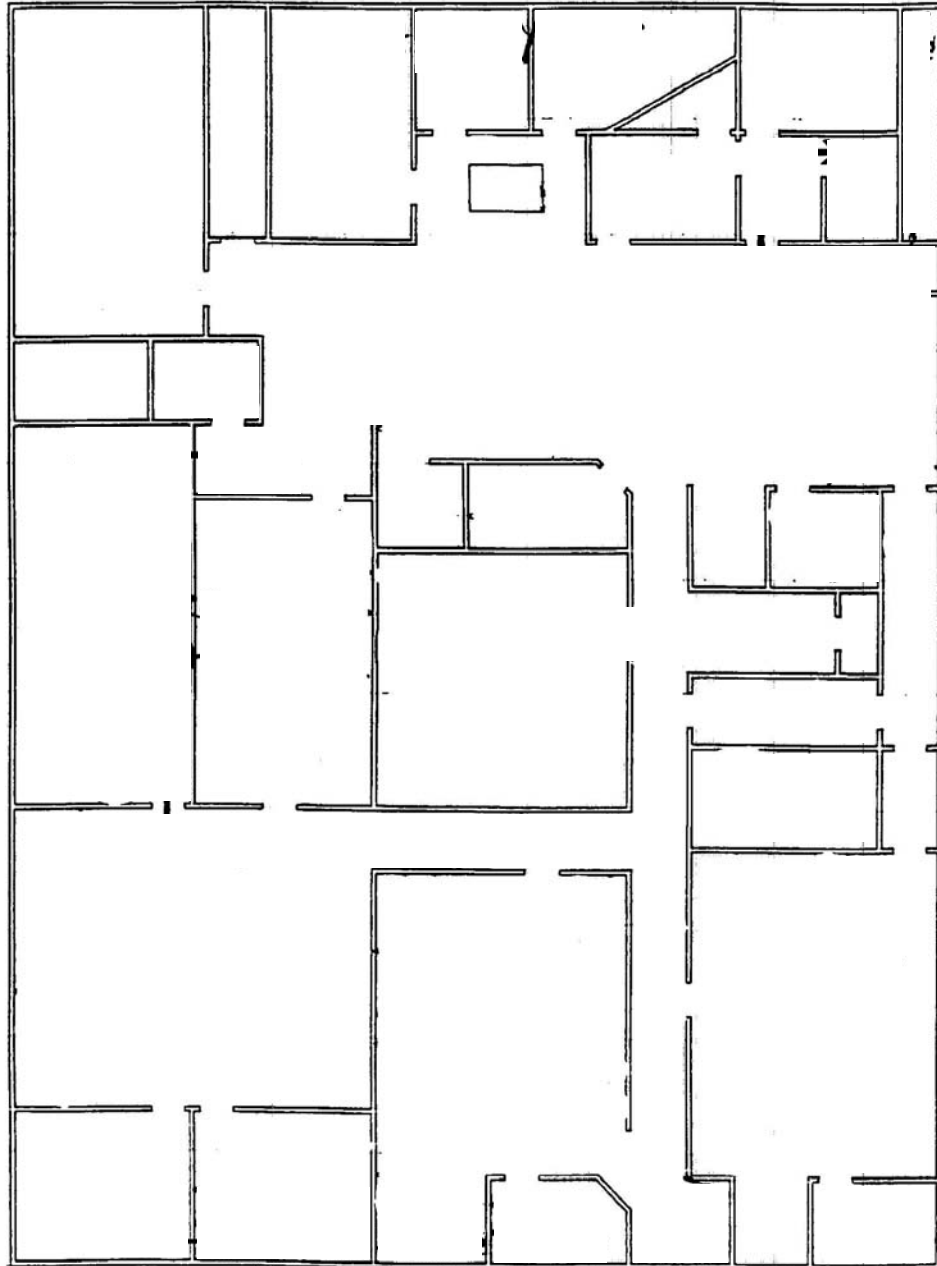
For information contact:

Tracy Carpenter

(360) 671-4200 ex 3114
tracy@pacificcontinentalrealty.com

2nd Floor

(Alley)



(State Street)



114 W. Magnolia, Suite 302
Bellingham, WA 98225

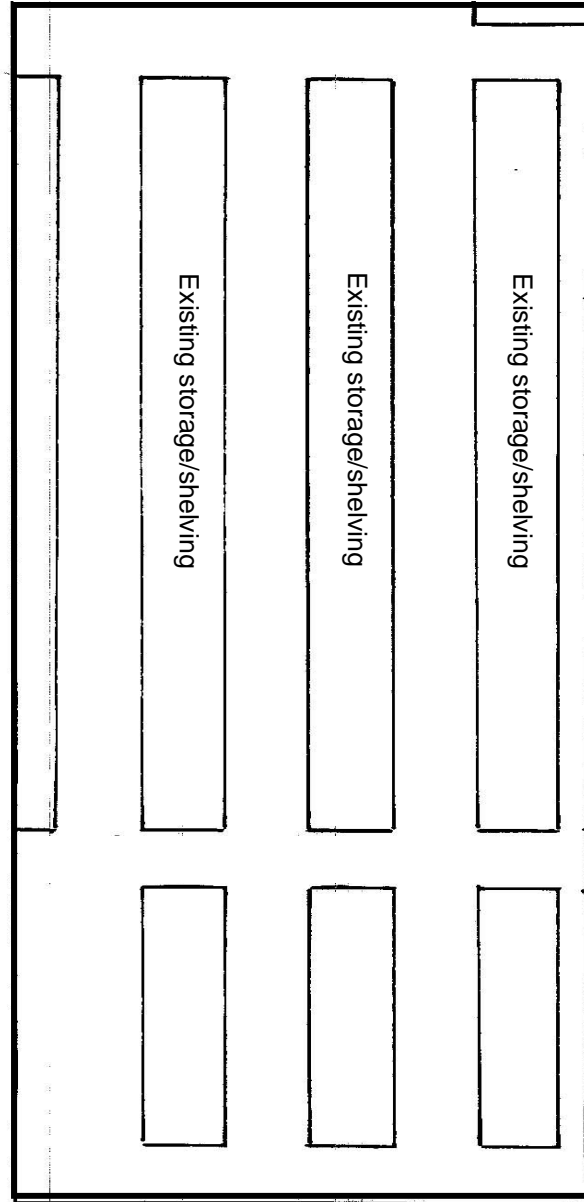
For information contact:

Tracy Carpenter

(360) 671-4200 ex 3114
tracy@pacificcontinentalrealty.com

Information contained herein has been obtained from the owner of the property or from other sources that we deem reliable. We have no reason to doubt its accuracy, but we do not guarantee it.

3rd Floor



114 W. Magnolia, Suite 302
Bellingham, WA 98225

For information contact:

Tracy Carpenter

(360) 671-4200 ex 3114
tracy@pacificcontinentalrealty.com