

# FOR SALE | 8.35 Acres with 2 Geodesic Domes

2002 Valley Highway, Acme, WA



## Previous Electronic Testing Site For Sale

- Located in Acme, WA viewable from Hwy 9 and just south of the Acme grocery store. 25 miles from both Bellingham and Mount Vernon, WA.
- 8.35 total acres, comprised of three connecting parcels, is improved with two light industrial geodesic dome buildings constructed in 1986 and 1990 for a testing of electronic equipment and specifically radio wave emissions.
- Zoned "AG" agricultural; This current unique construction and land has a conditional use permit for this use.
- Additional improvements to the land include an asphalt and gravel vehicular circulation and parking area, a loading ramp serving the larger of the two geodesic domes second level.
- This property is serviced by public water (Acme Water District), electricity (Puget Power), natural gas (Cascade Natural Gas) and telephone service. The property is served with an on-site septic system with dual drain-fields for up to ten employees.



**Tracy Carpenter**  
Managing Broker  
360.671.4200

tracy@pacificcontinentalrealty.com

**Pacific Continental Realty LLC**  
114 West Magnolia Street, Suite 302, Bellingham, WA 98225  
www.pacificcontinentalrealty.com

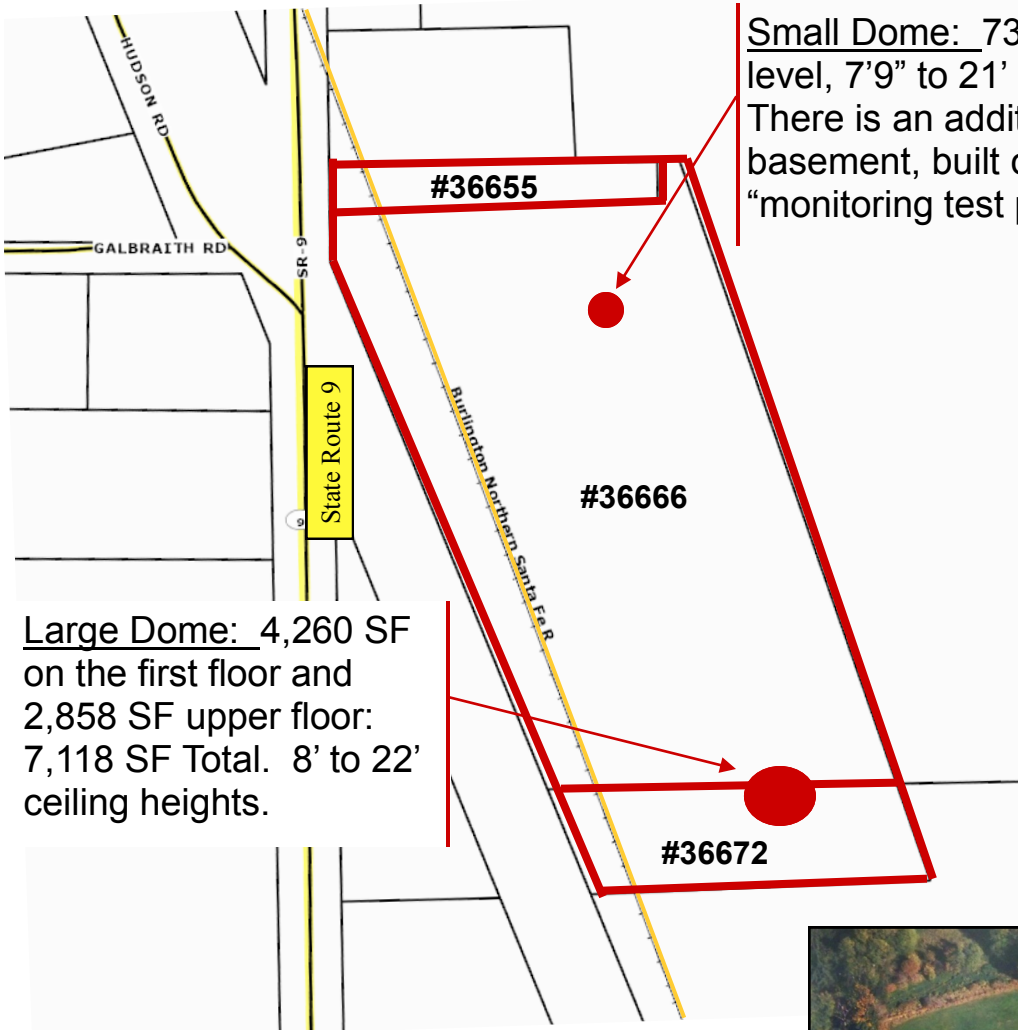


# FOR SALE | 8.35 Acres with 2 Geodesic Domes

2002 Valley Highway, Acme, WA



Sales, Leasing, Management  
Office, Retail and Industrial Properties



**Small Dome:** 730 SF on main level, 7'9" to 21' ceiling height. There is an additional 730 SF basement, built out as a "monitoring test pit".

**Large Dome:** 4,260 SF on the first floor and 2,858 SF upper floor: 7,118 SF Total. 8' to 22' ceiling heights.



These special use structures include no metal above the floor of the equipment test areas within each dome (for radio wave emission testing).

All testing equipment can be purchased separately. Contact Listing Broker for further details.

Parcel Property ID # 36655 = .42 Acres  
Parcel Property ID # 36672 = 1.45 Acres  
Parcel Property ID # 36666 = 5.1 + 1.38= 6.48 Acres  
Acres Total acres = 8.35



**Tracy Carpenter**  
Managing Broker  
360.671.4200

tracy@pacificcontinentalrealty.com

**Pacific Continental Realty LLC**

114 West Magnolia Street, Suite 302, Bellingham, WA 98225

www.pacificcontinentalrealty.com

