

# FOR SALE

**207 Samish Way, Bellingham, WA**



## High Visibility Drive-thru Location

- 3,600 SF stand alone building with drive-thru
- Highly visible to 12,900 traffic count per day (approx.)
- On 35 mph Samish Way with center turn lane for easy access
- 45 Parking Spaces
- Large visible signage
- Walk in freezer and refrigerator
- Ideal for a restaurant or retail establishment



- Close proximity to I-5 and Western Washington University (over 13,000 students and the #1 employer in Whatcom County with over 5,570 employees)
- Located in the popular Sehome Neighborhood



114 W. Magnolia, Suite 302  
Bellingham, WA 98225

For information contact:

**Jim or Corky**

Ofc: (360) 671-4200 x101

Jim's Cell: (360) 961-1369

Corky's Cell: (360) 393-0579

[jim@pacificcontinentalrealty.com](mailto:jim@pacificcontinentalrealty.com)

[corky@pacificcontinentalrealty.com](mailto:corky@pacificcontinentalrealty.com)



★ Subject Property  
207 Samish Way

**Surrounding Tenants Continued**

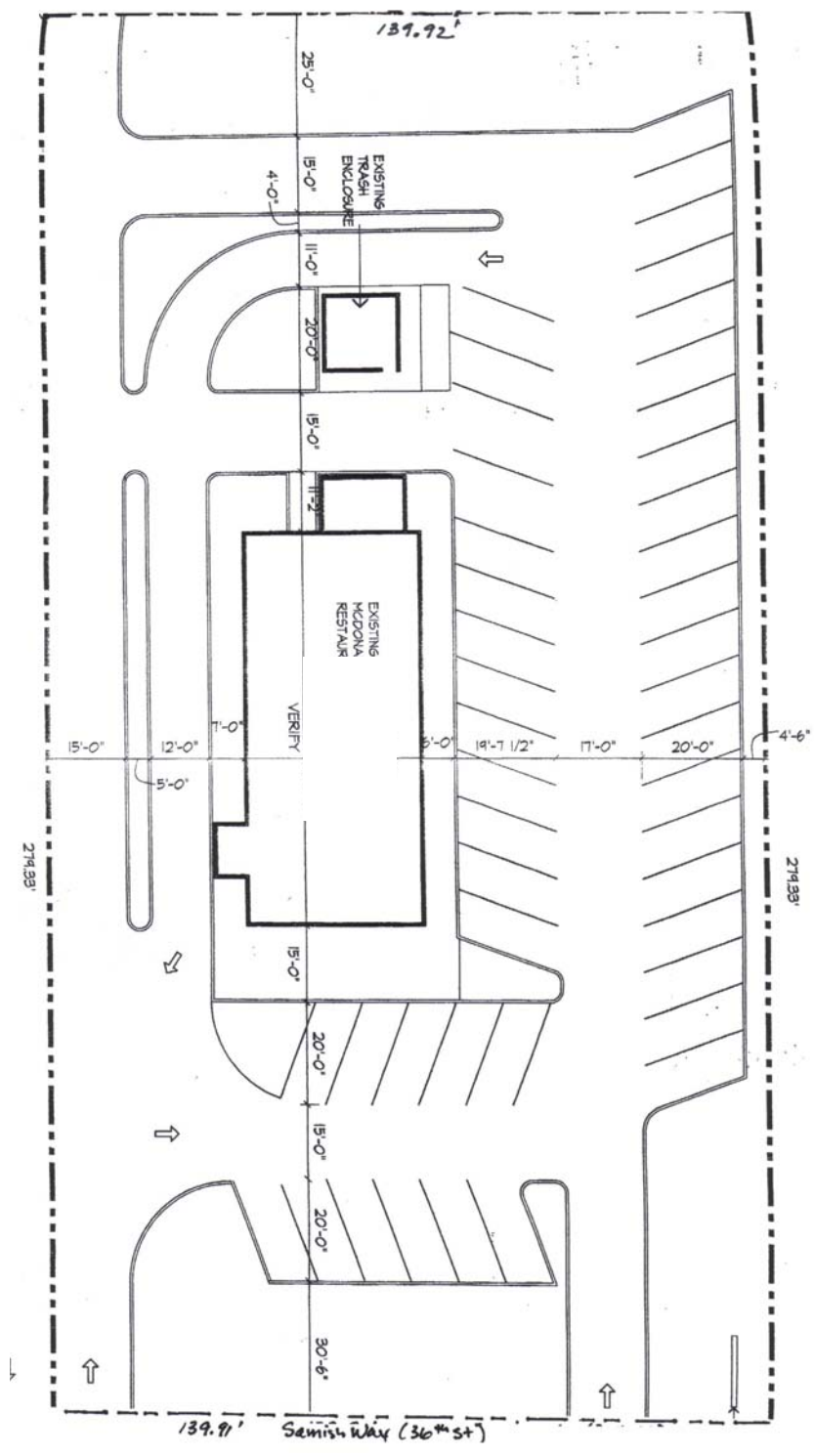
Sehome Village (8.92 acre shopping center), Travelodge motel, Emerald City Pizza, Lemon Grass Café, Kyoto Japanese Steakhouse, Bay City Motor Inn motel, Coachman Inn motel, Cascade Inn motel, On Rice Thai Cuisine, Villa Inn motel, Ramada Inn motel, Pik-me-up Espresso, Diego's restaurant, Boomer's drive in restaurant, Aloha motel, Pizza Hut, Papa John's Pizza, Taco Time, and more.....



114 W. Magnolia, Suite 302  
Bellingham, WA 98225

For information contact:  
**Jim or Corky**  
 Ofc:(360) 671-4200 x101  
 Jim's Cell: (360) 961-1369  
 Corky's Cell: (360) 393-0579  
[jim@pacificcontinentalrealty.com](mailto:jim@pacificcontinentalrealty.com)  
[corky@pacificcontinentalrealty.com](mailto:corky@pacificcontinentalrealty.com)

Information contained herein has been obtained from the owner of the property or from other sources that we deem reliable. We have no reason to doubt its accuracy, but we do not guarantee it.



114 W. Magnolia, Suite 302  
 Bellingham, WA 98225

For information contact:

**Jim or Corky**

Ofc: (360) 671-4200 x101

Jim's Cell: (360) 961-1369

Corky's Cell: (360) 393-0579

[jim@pacificcontinentalrealty.com](mailto:jim@pacificcontinentalrealty.com)

[corky@pacificcontinentalrealty.com](mailto:corky@pacificcontinentalrealty.com)

Information contained herein has been obtained from the owner of the property or from other sources that we deem reliable. We have no reason to doubt its accuracy, but we do not guarantee it.