

# CROWN PLAZA BUILDING

114 W. Magnolia St., Bellingham, WA 98225



Heather Baker, Broker

(360) 927-0639 | [HB@PCRnw.com](mailto:HB@PCRnw.com)

Commercial Sales | Leasing | Management

114 W. Magnolia St., Bellingham, WA 98225 | [www.PacificContinentalRealty.com](http://www.PacificContinentalRealty.com)

# OVERVIEW



## Suite 500: 2,520 Square Feet

Base Rent: \$16 Square Foot / Year  
Base NNN: \$6.42 Square Foot / Year  
Base Rent + NNN: \$4,708.20 / Per Month  
CBA#: 646019

## Suite 503: 1,873 Square Feet

Base Rent: \$16 Square Foot / Year  
Base NNN: \$6.42 Square Foot / Year  
Base Rent + NNN: \$3,499.38 / Per Month  
CBA#: 39293286

## Suite 501: 1,600 Square Feet

Base Rent: \$16 Square Foot / Year  
Base NNN: \$6.42 Square Foot / Year  
Base Rent + NNN: \$2,989.33 / Per Month  
CBA#: 646020

## Suite 506: 1,623 Square Feet

Base Rent: \$14 Square Foot / Year  
Base NNN: \$6.42 Square Foot / Year  
Base Rent + NNN: \$2,736.11 / Per Month  
CBA#: 584616

Opportunity to work in one of the top five large historical buildings in Bellingham, WA. The Crown Plaza is a tenanted, stabilized, and iconic building in the core of downtown Bellingham. Built-in 1927, this Neoclassical-style building is five stories with a mechanical basement.

Beautiful professional office building with fiber optic internet. Renovated historic building with an elegant interior. Great location in the heart of Bellingham's central business district. Close to the city, county, and federal buildings. Hundreds of services to support your business needs within a few blocks. Abundant shopping and dining opportunities. Within walking distance to everything.

*Information contained herein has been obtained from sources that we deem reliable. We have no reason to doubt its accuracy, but we do not guarantee it.*



### Building History

This building was initially known as the Montague & McHugh building, built on the corner of Magnolia and Commercial streets. Famous for its Neoclassical Commercial design, the five story structure was created with reinforced concrete covered in terra cotta. The terra cotta itself is glazed in a faux marble gray-pink that gives the building its distinctive look.

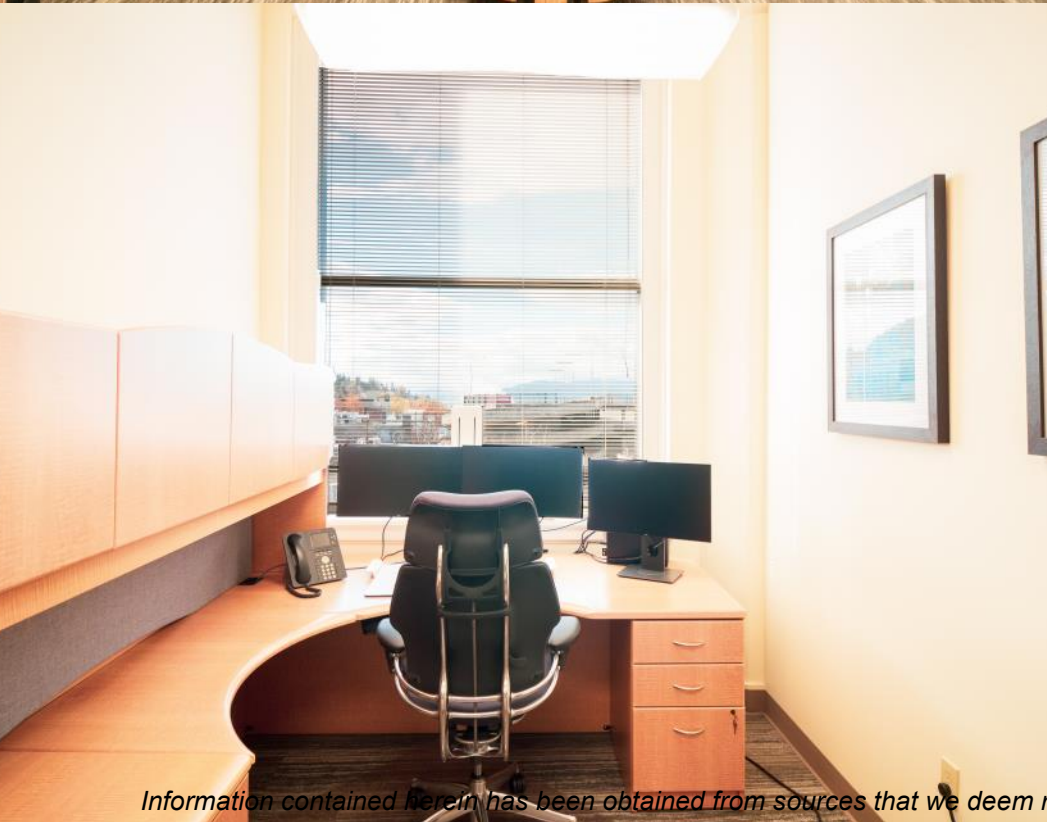
The building is almost square, 125 feet by 110 feet. Graham created a symmetrical appearance by adjusting the spacing of the features to keep things in proportion. There are rounded pediment arches, an ornamental frieze, spiral columns with finials, and rising fluted pilasters. The ornamentation of the outside of the building, particularly the first and second floors, is an astonishing amount of detail work. Within each pediment is a cartouche flanked by floral panels. Graham used friezes, vertical piers, and urn finials, as well as a projecting cornice with overhanging dentils in his work. The parapet has a floral cresting rising over a foot above it.

The third and fourth floors are less ornamental, but the windows and vertical elements continue in the same pattern for continuity. There are still architectural elements such as fluted pilasters, spandrels, and medallions. The ornate features of the building helped it stand out as downtown grew around it.

### Details

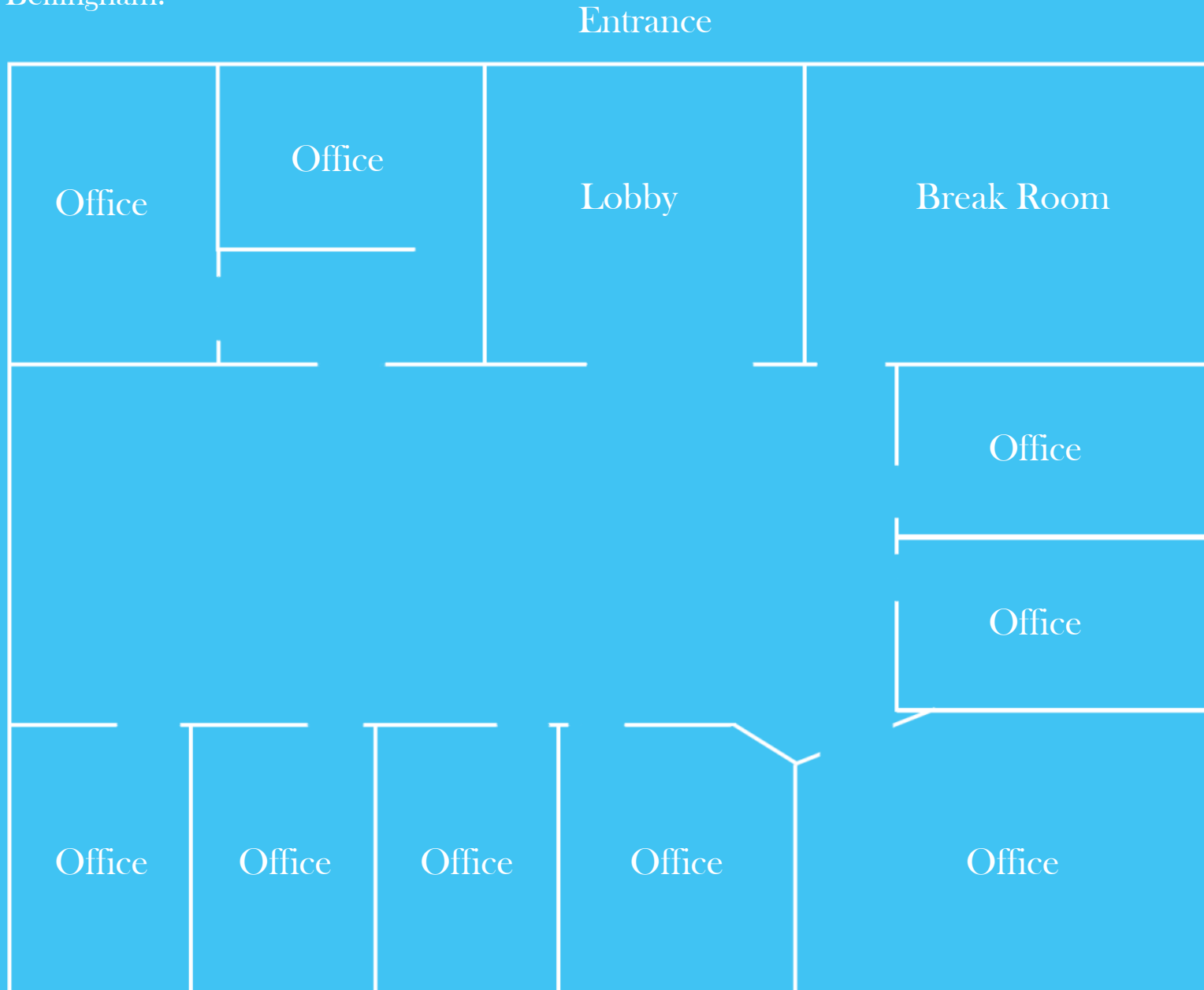
- Scenic views of the Bellingham waterfront, Mt. Baker, and beautiful downtown Bellingham
- Outstanding natural light
- Property management company on-site
- UPS & FedEx drop boxes in lobby
- Client parking available
- Ample foot traffic and easy access for customers
- Central Bellingham location that provides easy access to Interstate-5 and all areas
- Current tenants include government offices, attorneys, NGOs, NPOs, financial services, IT professionals, website design & graphics, marketing professionals, café, and salon

# SUITE 500

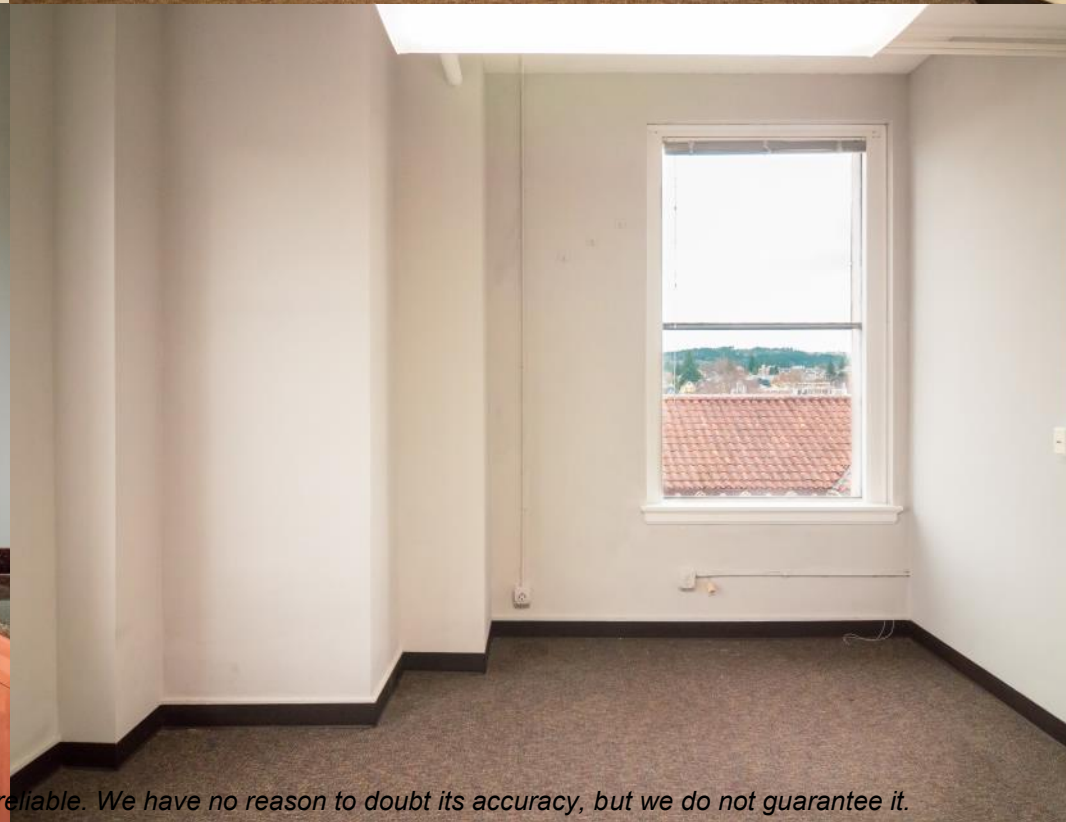
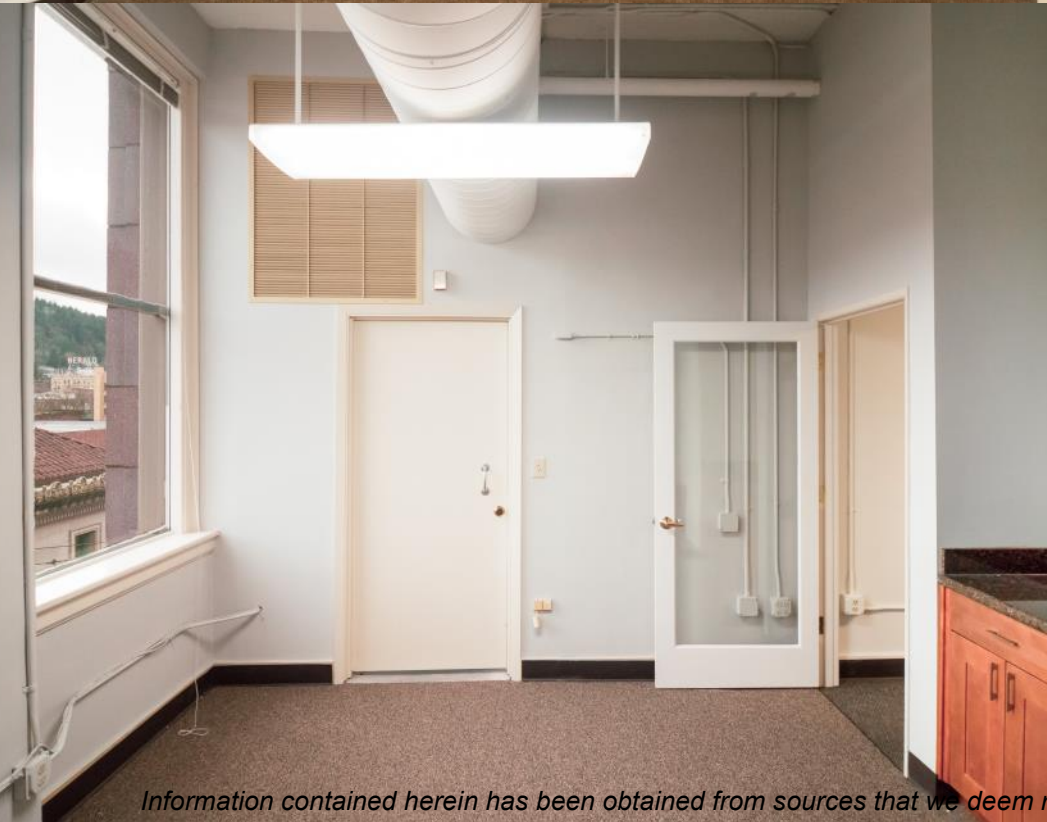
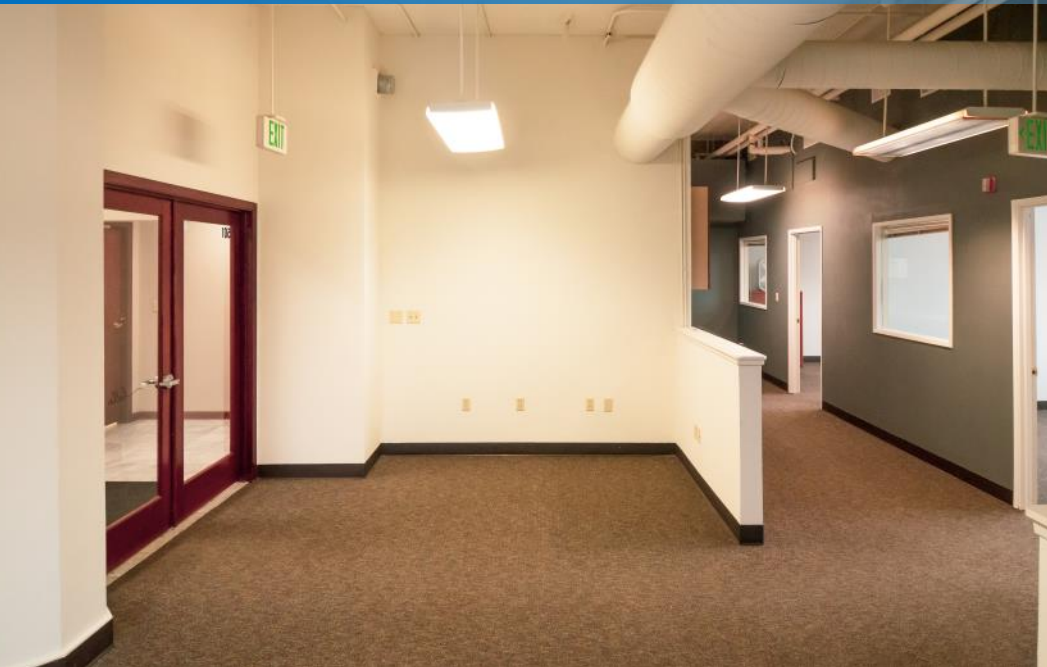


# SUITE 500 – 2,520 SF

Suite 500 is a large multi-office suite with a lovely view of the Downtown Bellingham district and the waterfront. With nine offices, a breakroom, and a large open interior this is a fantastic opportunity to lease a prime office in Downtown Bellingham.

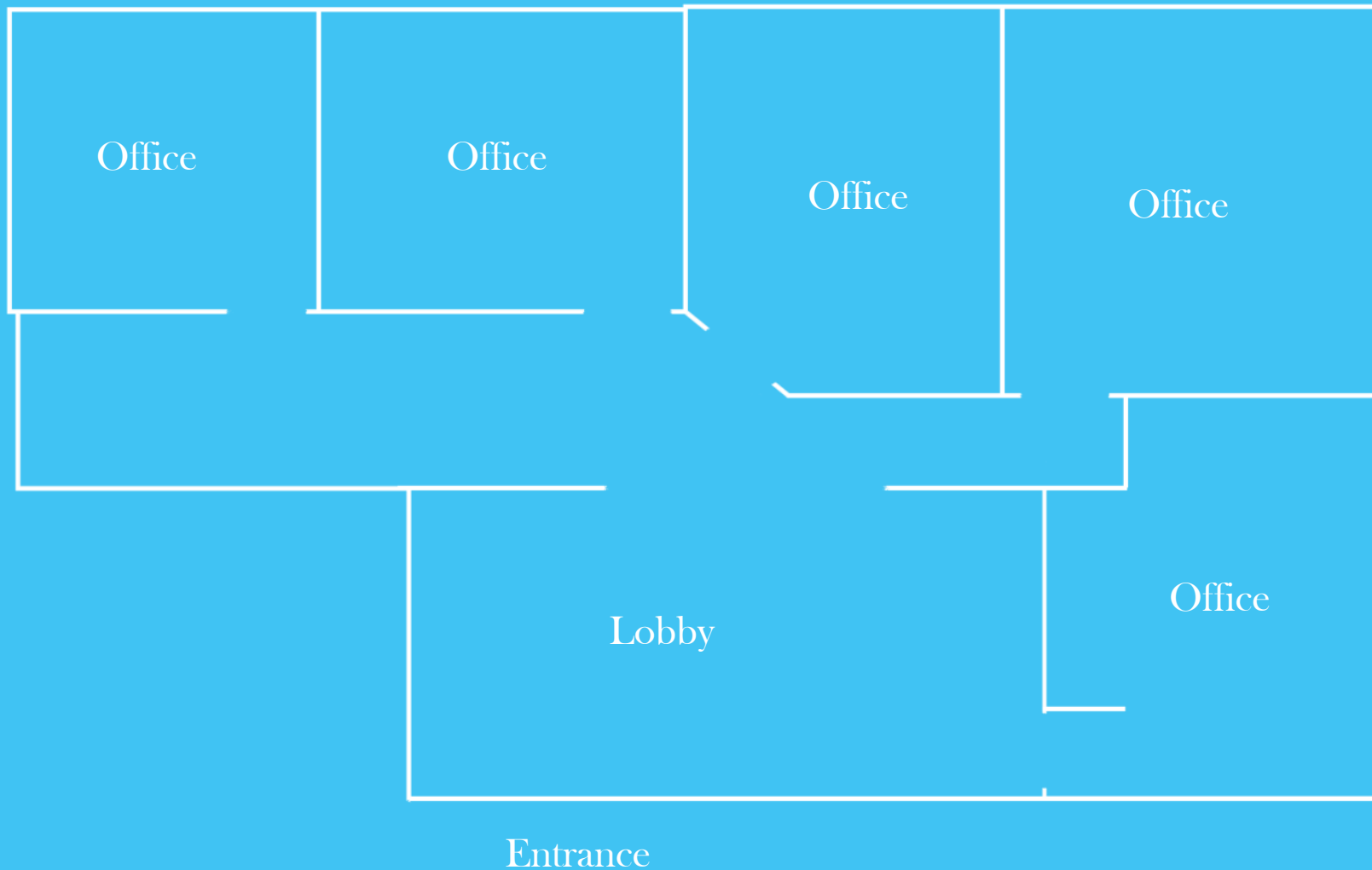


# SUITE 501

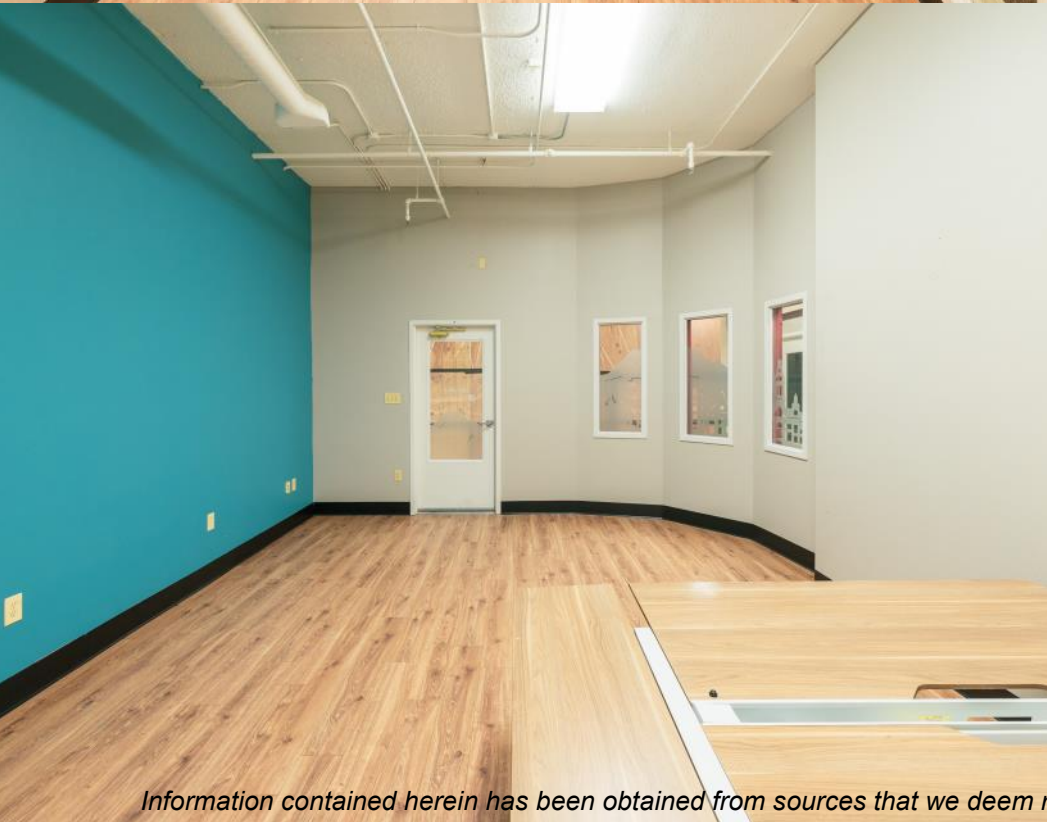


# SUITE 501 – 1,600 SF

Lovely five suite office space on the fifth floor of the historic Crown Plaza Building. All offices have a window view of the Downtown district and the Cascade Mountains. The suite also has a kitchenette located in the hallway of the space. Great opportunity to work in a prime area of Downtown Bellingham.



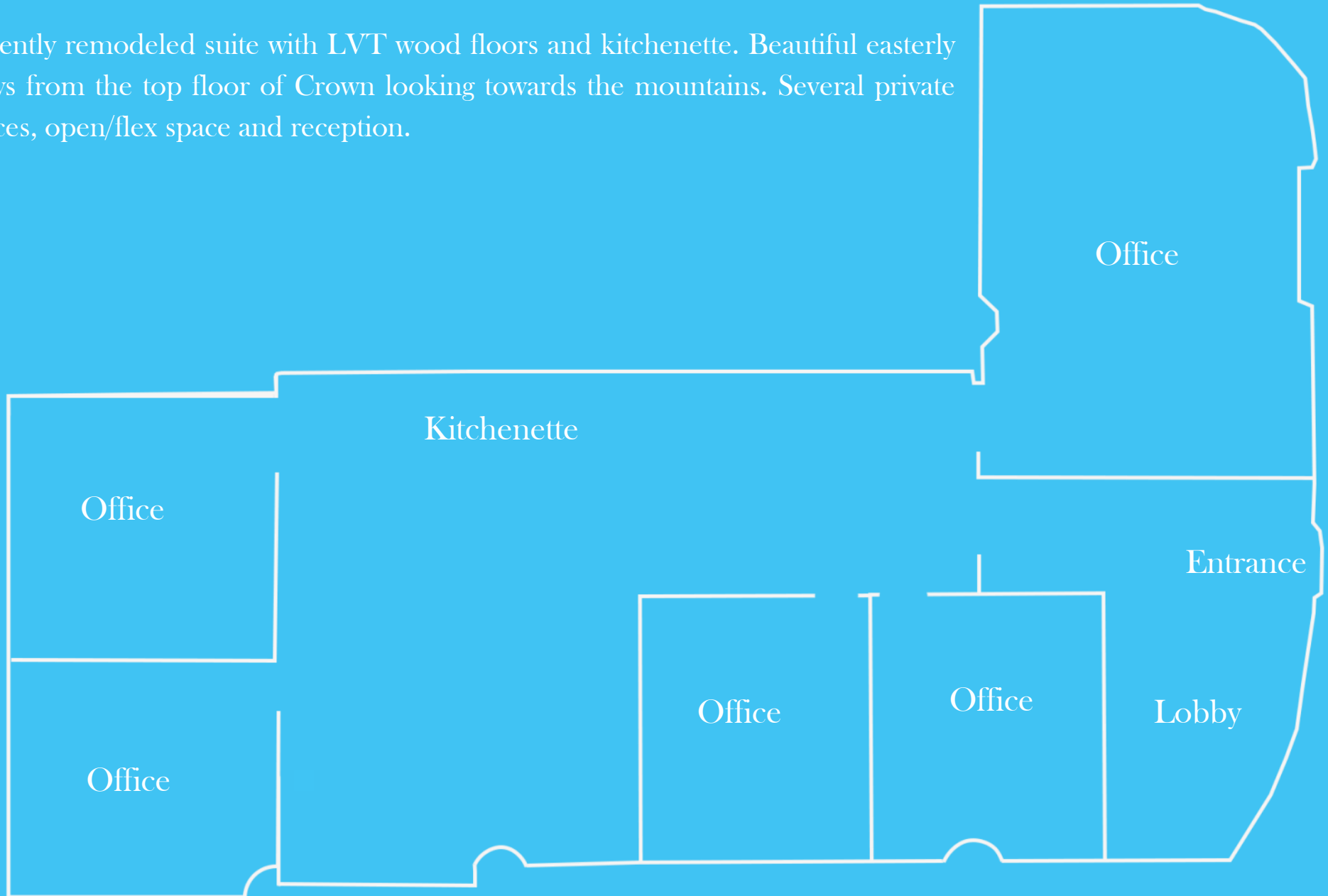
# SUITE 503





# SUITE 503 – 1,873 SF

Recently remodeled suite with LVT wood floors and kitchenette. Beautiful easterly views from the top floor of Crown looking towards the mountains. Several private offices, open/flex space and reception.

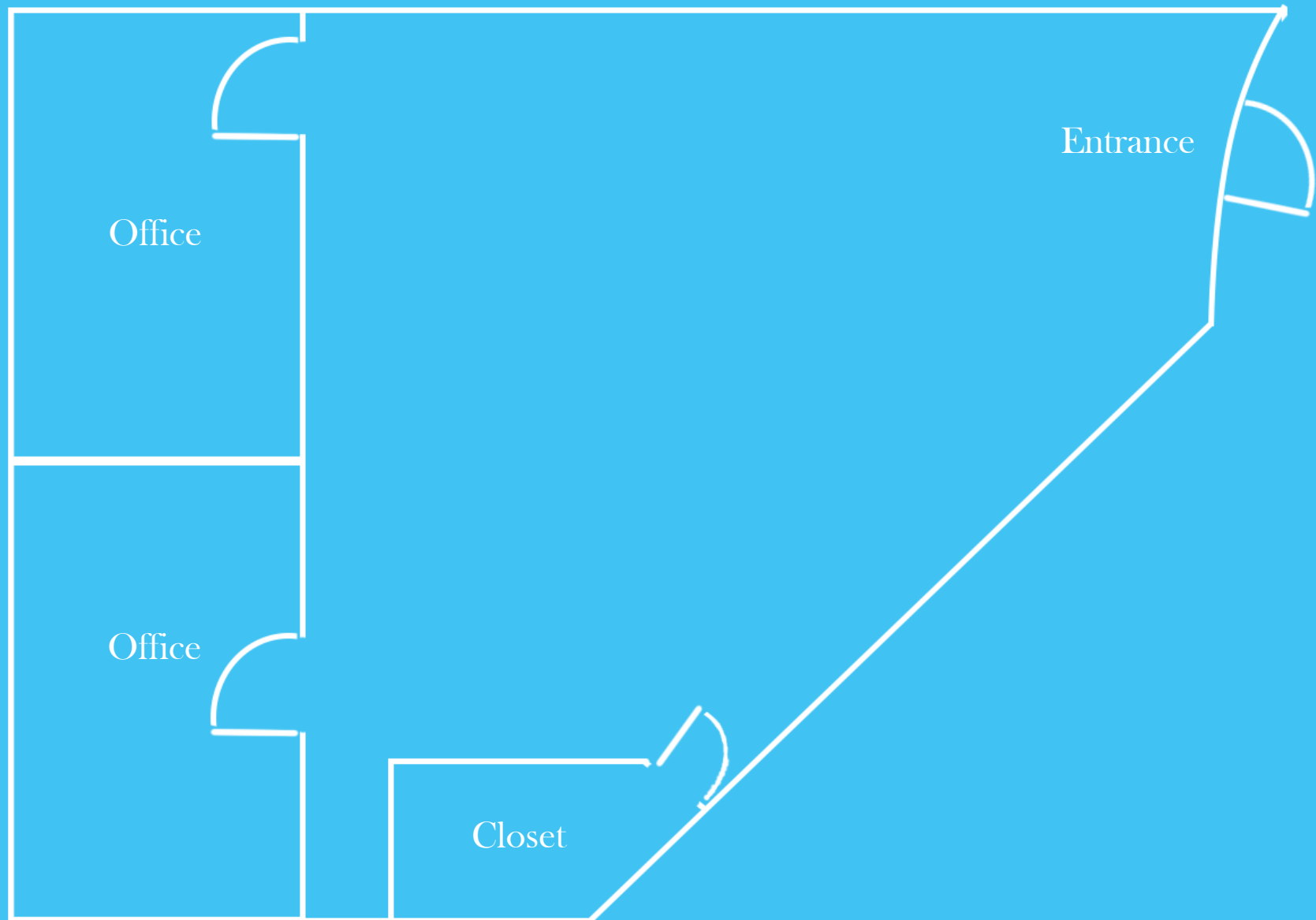


# SUITE 506



# SUITE 506 – 1,623 SF

Suite 506 is on the top floor of the Crown Plaza and has amazing views of Mt. Baker. Comprised of a large and open main room, and two spacious offices with windows that bring in natural light.



# MARKET AREA

The Pacific Northwest scarcely gets more peaceful than unspoiled Bellingham, a bustling city nestled in the Bellingham Bay. Nature abounds in all directions surrounding this coastal paradise. Bellingham can be conveniently accessed by land, air, rail, and sea. With easy transportation to both Canada and the international hub of Seattle, Bellingham offers a great middle point. While the Canadian market offers a diverse economy for the local businesses, continually businesses are migrating north to the area in order to find a new and better home. The waters of the Pacific offer opportunities for whale watching, cruising to Friday Harbor or visiting the Canadian city of Victoria. To the east, Mt. Baker beckons skiers and snowboarders to its slopes. The city itself is alive with vibrant theater, historical museums, gourmet restaurants and fine arts.



## NATURAL BEAUTY

The dominating Mt. Baker towers over the city, with its staggering beauty. The deep expansive blue of the ocean carries our sight to the San Juan Islands. All the while you are hugged by the soft green of thunderous trees that decorate land for as far as the eye can see.



## STRATEGIC LOCATION

The prosperous city Vancouver, Canada only sits 55 miles north. And the technological hub of Seattle resides 88 miles to the south. Bellingham provides an essential middle point for those looking to operate within both expanding districts.



## HIGHER EDUCATION

Within Whatcom there are five different institutions of higher education that cover a vast array of different focuses. Western Washington University, Whatcom Community College, Bellingham Technical College, NW Indian College, and Trinity University all provide qualified and skilled workers.

## DEMOGRAPHICS



### Population

230,077



### Average HH Income

\$80,569



### Median Age

39

Whatcom County:

Bellingham:

93,910

\$80,709

37.5

# CROWN PLAZA BUILDING

114 W. Magnolia St., Bellingham, WA 98225

Heather Baker, Broker

(360) 927-0639 | [HB@PCRnw.com](mailto:HB@PCRnw.com)



Commercial Sales | Leasing | Management

114 W. Magnolia St., Bellingham, WA 98225 | [www.PacificContinentalRealty.com](http://www.PacificContinentalRealty.com)

*Information contained herein has been obtained from sources that we deem reliable. We have no reason to doubt its accuracy, but we do not guarantee it.*