

PROFESSIONAL MEDICAL OFFICE SUITE



16410 Smokey Point Blvd, Smokey Point, WA

Noah Carlson, Broker

(360) 441-0963 | Noah@PCRnw.com



OVERVIEW



Suite 306: 1,191 SF

Base Rent: 31.49 SF/Y

Per Month: \$3,126.28 + NNN

CBA #: 42733567

This spacious 1,191-square-foot corner suite is located on the second floor of a well-maintained medical and professional office building. Offering excellent visibility from I-5 and conveniently situated just off Smokey Point Boulevard, this suite provides both high exposure and easy accessibility. The building features abundant on-site parking for staff and visitors, making it an ideal location for medical practitioners, wellness services, or other professional office users.

LOCATION



Everett, WA

22 minutes

14.5 miles

Marysville, WA

12 minutes

7 miles

I-5 Exits 206

4 minutes

0.7 miles



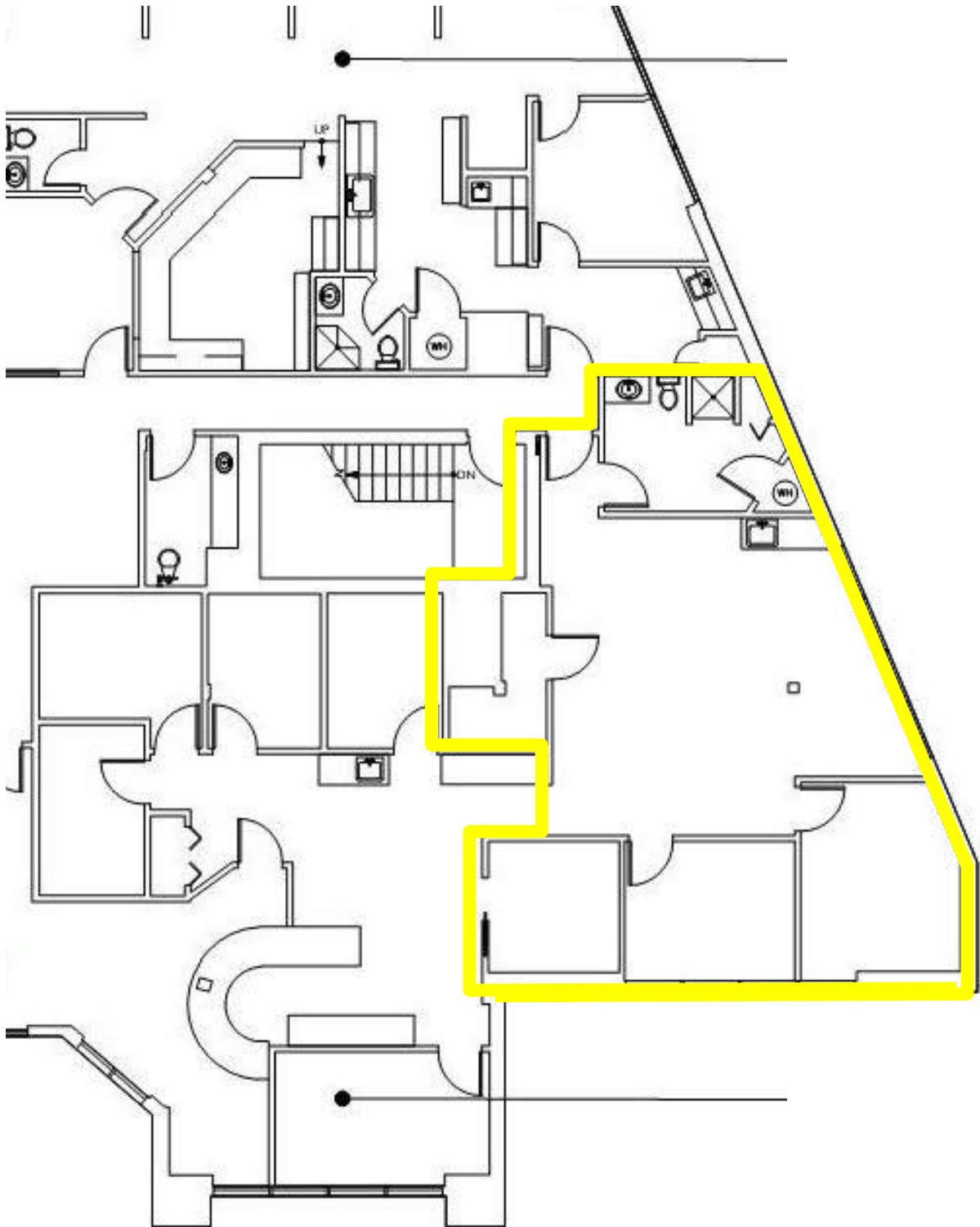
I-5 Freeway

Smokey Point Blvd

Information contained herein has been obtained from sources that we deem reliable. We have no reason to doubt its accuracy, but we do not guarantee it.

FLOOR PLAN

- Prominent Medical/Professional office Building
- Updated and well apportioned Lobbies and Common Areas
- Easy Access from Smokey Point Blvd
- 118 shared parking spaces on property
- Outstanding visibility from I-5 w/ 100,000+ daily traffic counts



Information contained herein has been obtained from sources that we deem reliable. We have no reason to doubt its accuracy, but we do not guarantee it.